




# WisVote Election Reconciliation

2022 WISVOTE FALL WEBINAR SERIES

1



## Today's Webinar Panel

Patrick Brennan	WisVote Training Officer
Sarah Statz	Senior WisVote Specialist
Aaron Knautz (Moderator)	WisVote Specialist

2

# Today's Agenda

Where does reconciliation data come from?

Reconciliation Comments

Reconciliation Improvements

Common Issues

EDR Postcard Report

3

# Where does the data come from?



4

# Where does the data come from?

All reconciliation data comes from clerk data entry!



5

# How Reconciliation Populates

Election Statistics	
<b>General</b>	
Jurisdiction	CITY OF ADAMS - ADAMS COUNTY
Election	2022 Partisan Primary
Poll Book Name	Wards 1-5
Reporting Unit	Wards 1-5
EL-104	CITY OF ADAMS WARDS 1-5
Order	1201.001
State Override	<input type="checkbox"/>
SO Comments	
<b>Provisional Ballots</b>	
Provisionals Issued (EL104)	0
Provisionals Issued (W/Vote)	0
Provisionals Match	0
Documents Provided	0
Provisionals Counted	0
<b>Absentee</b>	
Absentees Counted (EL104)	33
Absentee Participation (W/Vote)	33
Absentee Ballots Returned (W/Vote)	33
Absentees Match	0
<b> Voter Statistics</b>	
Total Votes (Canvass)	237
Total Voters (EL-104)	237
Total Voters (W/Vote)	237
Total Ballots (EL-104)	237
Voter Statistics Match	0
Voters Comments	
<b>Election Day Registrations</b>	
EDRs (EL-104)	11
EDRs w/ Recorded Vote (W/Vote)	11
EDRs w/o Recorded Vote (W/Vote)	0
EDRs Match	0
EDRs Comments	
<b>Regular Absentees Returned</b>	
Regular Absentees Returned	33
Military Absentees Returned	0
Temporary Overseas Returned	0
Perm Overseas Returned	0
FWABs Returned	0

6

# How Reconciliation Populates

What does (Canvass) mean?

Only field that requires WEC staff action



Canvass numbers entered by counties/municipalities

Canvass # = total votes case in state-level contest with highest vote total

WEC staff update field after all counties are certified

<b>Election:</b>	2022 Partisan Primary (8/9/2022)
<b>County:</b>	ADAMS
<b>Status:</b>	Certified
<b>Result Set:</b>	Original
Contests 6 of 36	
< UNITED STATES SENATOR - Democratic >	
Save Save & Next Certification Report	

7

# How Reconciliation Populates

Election Statistics	
<b>General</b>	
Jurisdiction	CITY OF ADAMS - ADAMS COUNTY
Election	2022 Partisan Primary
Roll Book Name	Wards 1-5
Reporting Unit	Wards 1-5
EL-104	CITY OF ADAMS WARDS 1-5
Order	1201.001
State Override	<input type="checkbox"/>
SO Comments	
<b>Provisional Ballots</b>	
Provisionals Issued (EL104)	0
Provisionals Issued (W/Vote)	0
Provisionals Match	0
Documents Provided	0
Provisionals Counted	0
<b>Absentee</b>	
Absentees Counted (EL104)	33
Absentee Participation (W/Vote)	33
Absentee Ballots Returned (W/Vote)	33
Absentees Match	0
<b> Voter Statistics</b>	
Total Votes (Canvass)	
Total Voters (EL-104)	237
Total Voters (W/Vote)	237
Total Ballots (EL-104)	237
Voter Statistics Match	0
Voters Comments	
<b>Election Day Registrations</b>	
EDRs (EL-104)	11
EDRs w/ Recorded Vote (W/Vote)	11
EDRs w/o Recorded Vote (W/Vote)	0
EDRs Match	0
EDRs Comments	
<b>Regular Absentees Returned</b>	
Regular Absentees Returned	33
Military Absentees Returned	0
Temporary Overseas Returned	0
Perm Overseas Returned	0
FWABs Returned	0

8

# How Reconciliation Populates

What does (WisVote) mean?

The data was calculated from within the associated election

Total Voters(WisVote)

Absentee Participation(WisVote)

Total At Polls Participation	204
Total Absentee Participation	33
Total EDR Participation	11
Total Participation Recorded	237

9

# How Reconciliation Populates

What does (WisVote) mean?

The data was calculated from within the associated election

EDRs w/ Recorded Vote(WisVote)

EDRs w/o Recorded Vote(WisVote)

Total At Polls Participation	204
Total Absentee Participation	33
Total EDR Participation	11
Total Participation Recorded	237

10

# How Reconciliation Populates

What does (WisVote) mean?

The data was calculated from within the associated election

Absentee Ballots Returned(WisVote)

Only "Returned" status reason!

Absentee Ballots Associated View

MARK BALLOTS AS RETU... RECORD RETURNED BALL... LETTERS MARK BALLOTS AS NOT ...

Name	Mailing Id	Date Ballot Sent	Date Ballot Re...	Ballot Status Reaso...
Anderson, Edward J...	6,220,836	6/24/2022	7/8/2022	Returned
Banie, Kay E	6,220,798	6/24/2022	7/25/2022	Returned
Baumgart, Joyce E	6,220,799	6/24/2022	7/15/2022	Returned

11

# How Reconciliation Populates

What does (WisVote) mean?

The data was calculated from within the associated election

Provisionals Issued(WisVote)



Provisional Ballots Associated View

ADD NEW PROVISIONAL ... CHART PANE RUN REPORT EXPORT PROVIS

Voter Name	Counted/Rejec...	Provisional Ballot Status...	Reporting Unit...
Bean, Gabriel Ke'loni	Rejected	Deadline Expired	Ward 34
Bratchett, Edwin D	Rejected	Deadline Expired	Ward 103
Halvorson, Alexandria	Counted	Complete	Ward 176

12

# How Reconciliation Populates

Election Statistics	
<b>General</b>	
Jurisdiction	CITY OF ADAMS - ADAMS COUNTY
Election	2022 Partisan Primary
Poll Book Name	Wards 1-5
Reporting Unit	Wards 1-5
EL-104	CITY OF ADAMS WARDS 1-5
Order	1.201.001
State Override	<input type="checkbox"/>
SD Comments	
<b>Provisional Ballots</b>	
Provisionals Issued (EL104)	0
Provisionals Issued (W/Vote)	0
Provisionals Match	
Documents Provided	0
Provisionals Counted	0
<b>Absentee</b>	
Absentees Counted (EL104)	33
Absentee Participation (W/Vote)	33
Absentee Ballots Returned (W/Vote)	33
Absentees Match	
<b> Voter Statistics</b>	
Total Votes (Canvass)	
Total Voters (EL-104)	237
Total Voters (W/Vote)	237
Total Ballots (EL-104)	237
Voter Statistics Match	
Voters Comments	
<b> Election Day Registrations</b>	
EDRs (EL-104)	11
EDRs w/ Recorded Vote (W/Vote)	11
EDRs w/o Recorded Vote (W/Vote)	0
EDRs Match	
EDRs Comments	
<b>Regular Absentees Returned</b>	
Regular Absentees Returned	33
Military Absentees Returned	0
Temporary Overseas Returned	0
Perm Overseas Returned	0
FWABs Returned	0

13

# How Reconciliation Populates

What does (EL-104) mean?

The data was populated using entries in the EL-104 associated entity

Note: 1. If Central Count is used, add central count number of voters and ballots counted to Total Voters and Total Ballots from polling place paper inspectors' Statement for this reporting unit.  
 2. Number of provisionals counted should NOT be included in the Total Voters or Total Ballots fields  
 3. Number of Absentee Voters should only be those that had their ballot counted on election day, not ones that were rejected

General	
Order	1.201.001
Election	2022 Partisan Primary
Name *	CITY OF ADAMS WARDS 1-5
County	ADAMS COUNTY
Jurisdiction	CITY OF ADAMS - ADAMS COUNTY
<b>Number of Votes Cast On:</b>	
Paper (Hand Count) *	0
Optical Scan *	237
DRE (Touch Screen) *	0
<b>Summary Statistics</b>	
Total Number of Voters *	237
Number of Absentee Voters *	33
Number of Provisional Ballots *	0
Total Number of Ballots Cast *	237
Total Number of EDRs *	11

14

# How Reconciliation Populates

What does (EL-104) mean?

The data was populated using entries in the EL-104 associated entity



15

# How Reconciliation Populates

What does (EL-104) mean?

The data was populated using entries in the EL-104 associated entity



16



# How Reconciliation Populates

What does (EL-104) mean?

The data was populated using entries in the EL-104 associated entity

Total Number of Voters *	237	EDRs (EL-104)	11
Number of Absentee Voters *	33	EDRs w/ Recorded Vote (WisVote)	11
Number of Provisional Ballots *	0	EDRs w/o Recorded Vote (WisVote)	0
Total Number of Ballots Cast *	237	EDRs Match	
Total Number of EDRs *	11	EDRs Comments	

17

# How Reconciliation Populates

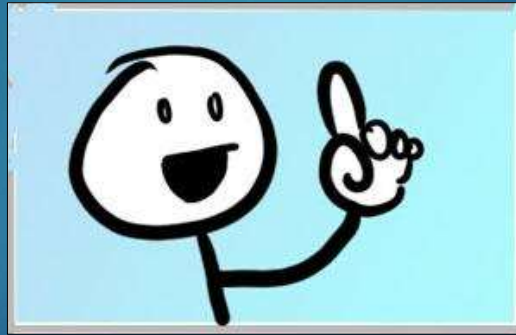
What does (EL-104) mean?

The data was populated using entries in the EL-104 associated entity

Total Number of Voters *	237	Absentees Counted (EL104)	33
Number of Absentee Voters *	33	Absentee Participation (WisVote)	33
Number of Provisional Ballots *	0	Absentee Ballots Returned (WisVote)	33
Total Number of Ballots Cast *	237	Absentees Match	
Total Number of EDRs *	11		

18

# Reconciliation Comments



19

# Reconciliation Comments

What do they do?

State Override	<input type="checkbox"/>
SO Comments	.....

State Override Comment: Can only be added by WEC staff

EDRs Match	<input type="checkbox"/>
EDRs Comments	.....

Voter Statistics Match	<input type="checkbox"/>
Voters Comments	.....

Voter & EDR Comments: Can only be added by WisVote users

20

# Reconciliation Comments

What do they do?

Comments are an override for the section or the reporting unit

WisVote will consider the section or reporting unit resolved

Not a shortcut or get out of reconciliation free card

21

# Reconciliation Comments

What do they do?

Should only be used when a section does not match & cannot be fixed in WisVote

Brief explanation of the reason for non-match: no names or blame should be included

Comment should refer only to the section being commented

22

# Reconciliation Comments

What makes a good comment?

Total Voters (EL-104)	507
Total Voters (WisVote)	507
Total Ballots (EL-104)	510
Voter Statistics Match	<input type="checkbox"/>
Voters Comments	Ward 1-2 ballots were erroneously given to 3 voters in Wards 3,5

Total Voters (EL-104)	238
Total Voters (WisVote)	238
Total Ballots (EL-104)	237
Voter Statistics Match	<input type="checkbox"/>
Voters Comments	1 less ballot than voters. Voter numbers were reviewed and accurate. Uncounted / missing ballot was not located on election day.

23

# Reconciliation Comments

What makes a comment "bad"?

EDRs (EL-104)	7
EDRs w/ Recorded Vote (WisVote)	7
EDRs w/o Recorded Vote (WisVote)	1
EDRs Match	<input type="checkbox"/>
EDRs Comments	Not sure why its showing an EDR with out a vote. Only 7 EDRs.

Total Voters (EL-104)	217
Total Voters (WisVote)	212
Total Ballots (EL-104)	133
Voter Statistics Match	<input type="checkbox"/>
Voters Comments	Reviewing to find where the one ballot is off.

Total Voters (EL-104)	54
Total Voters (WisVote)	51
Total Ballots (EL-104)	54
Voter Statistics Match	<input type="checkbox"/>
Voters Comments	see inspector statement

24

# Reconciliation Comments

## Comment vs correct paper record

What if the paper EL-104 is wrong?

Typos and math errors, two ways to proceed:

Enter correct number in WisVote &  
Attach note/sticky to paper EL-104 about difference

OR

Add comment to reconciliation

Total Number of Voters *	237
Number of Absentee Voters *	33
Number of Provisional Ballots *	0
Total Number of Ballots Cast *	237
Total Number of EDRs *	11

25

# Reconciliation Comments

## Comment vs correct paper record

What if the paper EL-104 is wrong?

Error occurred at polling place:  
e.g., wrong ballot style or ballot jam

Add a note to reconciliation

Contact WEC for override if in Absentee section impacted

Total Number of Voters *	237
Number of Absentee Voters *	33
Number of Provisional Ballots *	0
Total Number of Ballots Cast *	237
Total Number of EDRs *	11

26

# Reconciliation Improvements



27

# Reconciliation Improvements

## Update Reconciliation Button



Located inside each Election Reconciliation reporting unit

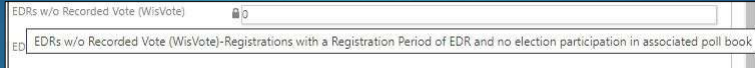
Allows updating the reporting unit w/o waiting for 8pm system update

Allows confirming a correction w/o waiting to the next day

28

# Reconciliation Improvements

## Tooltip information/explanations



Visible when hovering over a field

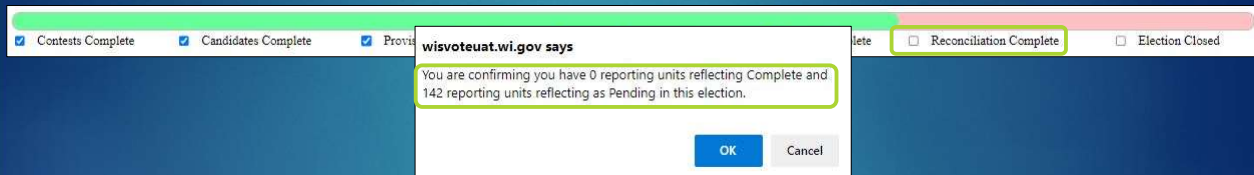
Explanation of where the number comes from

Added due to clerk feedback on original reconciliation page

29

# Reconciliation Improvements

## Reconciliation Complete Checkpoint



Visual reminder when reconciliation is required

Not a "smart" checkpoint

Will summarize current status when checked

30

## Common Issues



31

## Common Issues

Before election certification  
Voter section doesn't match!

Total Votes (Canvass)	---
Total Voters (EL-104)	534
Total Voters (WisVote)	534
Total Ballots (EL-104)	534
Voter Statistics Match	<input type="checkbox"/>
Voters Comments	

Canvass totals not uploaded yet!

Uploaded by WEC after all counties have certified

Do not add a comment to override!

32



# Common Issues

## EDR w/o Participation

EDRs (EL-104)	32
EDRs w/ Recorded Vote (WisVote)	32
EDRs w/o Recorded Vote (WisVote)	1
EDRs Match	<input type="checkbox"/>
EDRs Comments	.....

Can only be created if an EDR has their participation deleted\*

If removing an EDR participation, keep track of who/when

An EDR that doesn't vote, is still an EDR for statistics purposes

33

# Common Issues

## EDR w/o Participation

How do you fix one?

If you know the source record:

Not an EDR – enter a new registration, updating the existing record

Two records were created – Merge them together

34

## Common Issues

EDR w/o Participation  
How do you fix one?

If you do not know the source record:

Contact WEC Helpdesk

Unknown EDR w/o participation require an advanced find to locate

Do not comment/override if a record needs to be corrected!

35

## Common Issues

Provisional Ballot Counted  
Behind-the-scenes adding

Provisional not counted on Election Day is not an Election Day-issued ballot!

If not issued/counted on Election Day, would not be part of Inspectors' Statement

To balance, a counted provisional is invisibly added to voter totals check

36

## Common Issues

### Provisional Ballot Counted Behind-the-scenes adding

Provisional not counted on Election Day is not an Election Day-issued ballot!

Total Votes (Canvass)	410
Total Voters (EL-104)	681
Total Voters (WisVote)	682
Total Ballots (EL-104)	681
Voter Statistics Match	<input type="checkbox"/>
Voters Comments	.....

Provisionals Issued (EL104)	1
Provisionals Issued (WisVote)	1
Provisionals Match	<input type="checkbox"/>
Documents Provided	1
Provisionals Counted	1

WisVote participation = EL-104 Voters/Ballots + 1 = Voters Statistics Match

37

## Common Issues

### Provisional Ballot Counted What if provisional was cured on Election Day?

Section will never match due to the invisible addition step!

Comment should be added indicating provisional cured on Election Day

38

# Common Issues

Absentee Counts don't match  
Absentee participation or returned ballots aren't the same

The (WisVote) sections can be compared using excel!

Absentees Counted (EL104)	36
Absentee Participation (WisVote)	36
Absentee Ballots Returned (WisVote)	37
Absentees Match	<input type="checkbox"/>

Absentees Counted (EL104)	165
Absentee Participation (WisVote)	165
Absentee Ballots Returned (WisVote)	154
Absentees Match	<input type="checkbox"/>

Absentees Counted (EL104)	32
Absentee Participation (WisVote)	30
Absentee Ballots Returned (WisVote)	32
Absentees Match	<input type="checkbox"/>

Manual Chapter 5.4 – page 6: Finding a missing absentee ballot/participation

39

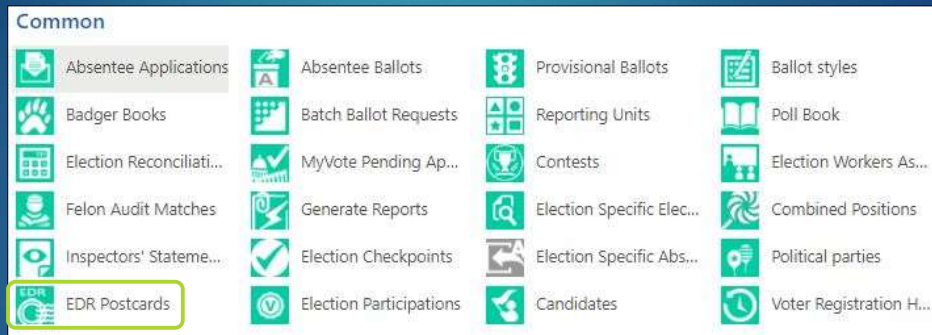
# EDR Postcard Report



40

# EDR Postcard Report

The forgotten election statistics report



41

# EDR Postcard Report

The forgotten election statistics report

Longest lead-time of any statistics report – due 90-days after the election

Tracked for the longest time post-election – 12 months

Report will never reflect as complete, can be updated as postcards return

42

# EDR Postcard Report

The forgotten election statistics report

EDR Postcards Associated View ▾

EXPORT EDR POSTCARDS | SCHEDULE EXPORT

Name ↑	Total EDRs	EDR Postcards ...	EDR Voters Ina...	Referred To DI...
EDR Postcards for CITY OF SUN PRAIRIE	350			

EDR Postcard Reporting

Jurisdiction *	CITY OF SUN PRAIRIE - DANE COUNTY	Total EDRs *	350
Election *	2022 Partisan Primary	EDR Postcards Returned Undeliverable *	.....
		EDR Voters Inactivated *	.....
Parent	DANE COUNTY	Referred To District Attorney *	.....

Total EDRs field auto-fills from poll book entry

43

# EDR Postcard Report

The forgotten election statistics report

EDR Postcard Reporting

Jurisdiction *	CITY OF SUN PRAIRIE - DANE COUNTY	Total EDRs *	350
Election *	2022 Partisan Primary	EDR Postcards Returned Undeliverable *	.....
		EDR Voters Inactivated *	.....
Parent	DANE COUNTY	Referred To District Attorney *	.....

Clerk entry required for remaining 3 fields

Each field cannot be larger than the one before

Remember to Save & Close after update!

44

# EDR Postcard Report

The forgotten election statistics report

**EDR Postcards Returned Undeliverable** = EDR postcard returned

**EDR Voters Inactivated** = Inactivated after undeliverable postcard and 30-day letter

**Referred to District Attorney** = Referred for potential prosecution due to returned postcard

45

# Resources

2019 WisVote Webinar Series - Election Statistics: Finding the proper balance

WisVote Manual – Chapter 5.4: Election Reconciliation Process

WisVote Manual – Chapter 5.4: EDR Postcard Reporting

46

## Questions?



47

## Upcoming WisVote Webinars

2022 General Election in WisVote  
September 20, 2022 10:00 a.m.

WisVote Absentee: Definitive Post Election Guide  
October 25, 2022 10:00 a.m.

48